

# Use Your Accessibility Checkers! Nothing bad will happen!

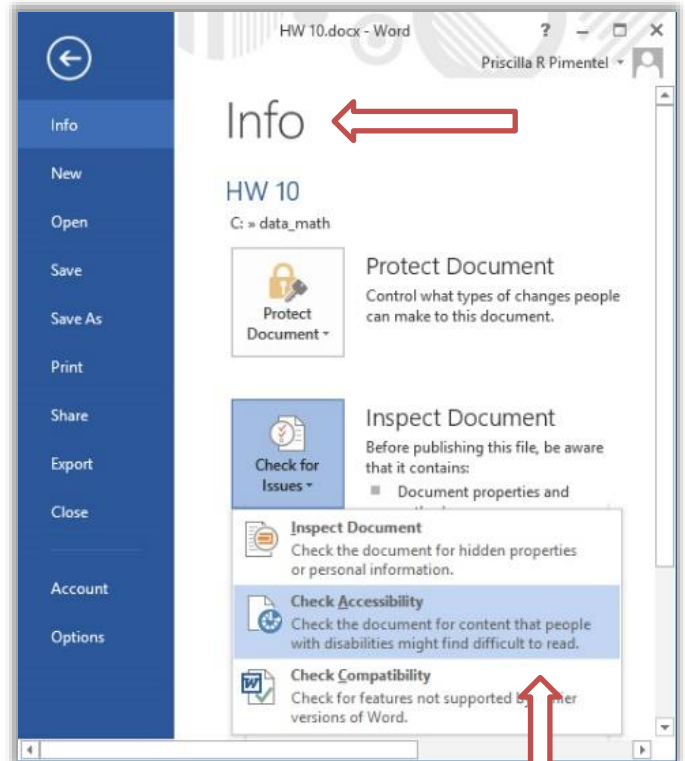
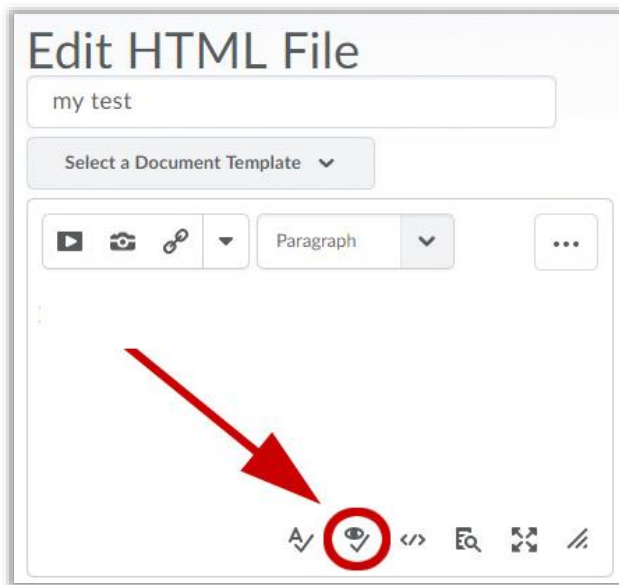
The **Accessibility Checker** will find possible issues, show you where they are, and suggest how to fix them. But, like SpellCheck, it won't always be right, and you can always ignore it.



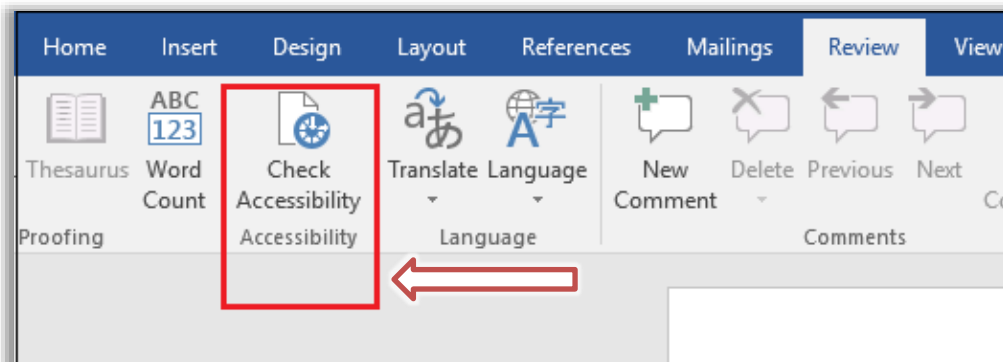
**Go ahead. Click the button.**

Accessibility Checker In Office (under the File menu)

Accessibility Checker In D2L



In Office 365 (in the Review ribbon)



Need more help with Accessibility? Visit [SIUC's accessibility website, www.accessibility.siu.edu](http://www.accessibility.siu.edu) or contact [CTE](#).